

IMAGING MODULES 910 & 600

From the leader in slit lamp imaging

Look closer. See further.

 **HAAG-STREIT**
DIAGNOSTICS

IMAGING MODULE 910

Innovating the field of slit lamp imaging

In today's fast-paced practice environment, clinicians face intense pressure to produce and document scores of high-quality images. Without an ophthalmic photographer at hand to compose the image and set the aperture and exposure, image capture becomes complex and time-consuming. Not only this: the success rate of conclusive images is often disappointing – spending more than a few seconds on capturing an image is heavily disruptive to clinical workflows.

That's why we developed the Imaging Module (IM 910), a fully integrated compact imaging solution for the BQ 900 slit lamp. Its smart imaging and integrated workflow simplify and accelerate the process of producing expressive and conclusive images at the touch of a button, streamlining your day-to-day activities so that you can focus fully on examining your patients.

With 3D-ready functionality, the IM 910 is not just a slit lamp camera – it's a platform on which we continue to innovate within the field of slit lamp imaging.



IMAGING MODULE 910

Ready when you are!

The IM 910 is instantly ready when you need it. Turn one knob and the IM 910 shares your view from the microscope directly on your screen – instantly!

Enjoy a smoother workflow the moment you start image capture. Instead of having to stop the exam, move to a computer, and start the camera, simply flip down the slit lamp mirror and you're ready to go. After you have captured an image, or multiple images, simply switch off the camera, and resume 100% light in the eyepieces once again.

The IM 910 boasts cutting-edge smart features to save time. The camera sensor and superb optics provide outstanding image quality, while a performant auto-exposure mode – combined with an automatic aperture control – guarantees great illumination. In addition, the integrated image selection algorithm auto-selects the sharpest and most expressive image possible.

Documenting images is equally efficient. Press the camera trigger button, and the software – with its comprehensive capturing and processing features – takes care of the rest. For flexibility, the IM 910 can be integrated into many different environments: whether that's EyeSuite, or your EMR or DICOM system. Regardless of the environment that you choose, enjoy easy access to images anytime, anywhere.



IMAGING MODULE 910 3D

Immersive 3D perception of the slit lamp examination

Haag-Streit is proud to continue to innovate within the field of slit lamp imaging with the Imaging Module 910 3D (IM 910 3D).

The IM 910 already provides high-resolution video stream – but only in 2D. With the addition of the IM 910 3D, we elevate the capabilities of the IM 910 by offering a dynamic 3D live-stream of impressive quality. Two 4K cameras capture two images simultaneously: one per eye in ultra high-definition – the result: an immersive depth impression, unveiling more detail, and a richer viewing experience.





DOCUMENTATION

DOCUMENTATION

Document your findings in 3D

Clinicians have become used to recording slit lamp images in 2D. However, “flat” images lack the capability to convey depth information, limiting the comprehensive visualization of the subject.

The IM 910 3D enables the recording of 3D content, rendering a more detailed and authentic representation of the slit lamp exam. The inclusion of depth information in the visual representation makes the perception of anatomical relationships easier to identify, enhancing the clarity and interpretability of observed content.

The comprehensive capture capabilities of the slit lamp place a wealth of material at the clinicians’ fingertips, supporting them with more efficient case reviews, quicker follow-ups, and the ability to form competent expert opinions.



TEACHING

TEACHING

A more collaborative & efficient learning experience

The IM 910 3D also includes features to increase comfort and efficiency for teachers of ophthalmology and optometry.

Often, 2D solutions fail to accurately convey the visual information intended for the co-observer. This creates a challenge for the examiner in ensuring that the resident accurately observes the relevant details when operating the slit lamp. With the IM 910 3D, the co-observer has the same view on the monitor that the examiner does through the oculars. This gives the examiner confidence that the resident has observed the relevant details, without having to observe the patient twice. This digital 3D visualization also negates the need for co-observer tubes, making for a more comfortable classroom experience.



TELEOPHTHALMOLOGY

TELEOPHTHALMOLOGY

Supporting teleconsultations in eye health care

Remote clinical services, or teleconsultation, whether performed synchronously or asynchronously, has emerged as a significant component of eye health service delivery, especially in the wake of the coronavirus pandemic.

The IM 910 3D fully supports remote clinical services*, facilitating the virtual consultation between patient and health care provider. This can be performed as a screening tool for new patients prior to an in-person visit, or for a pre-op visit prior to a scheduled surgery, providing convenience for those less able to attend the eye clinic. The transmission of the immersive 3D perception of the slit lamp exam provides the teleconsultant with the same impression as the examining clinician.

*Available in the USA only, not available in the EU

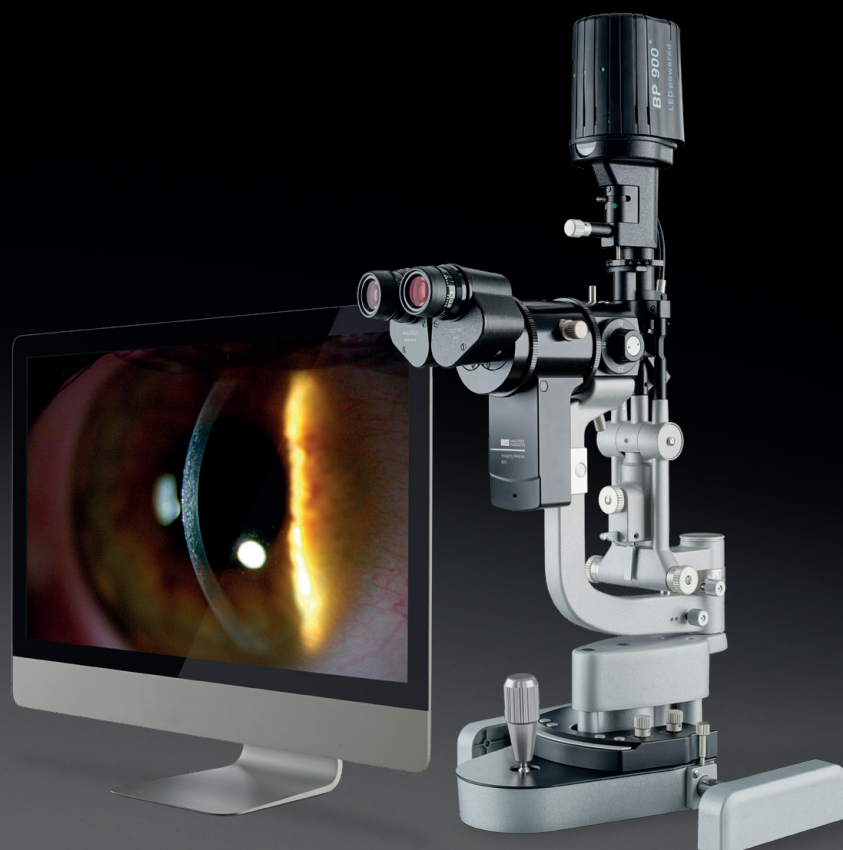
IMAGING MODULE 600

Simple slit lamp imaging & documentation

The Imaging Module 600 (IM 600) is the default imaging solution for the BP 900 slit lamp and is a cost-efficient alternative to the IM 910. Fully integrated and compact, it covers all the necessary features for straightforward slit lamp documentation.

The IM 600 boasts unique ergonomics that provide full control of the imaging process without detracting from the clinical examination. Its control panel, located in front of the joystick, can be operated “blindly” to support simple and intuitive operation of both the camera and the slit lamp illumination. Moreover, the IM 600 comes as a component of the whole system, supporting a complete examination workflow.

The IM 600's integrated EyeSuite software – with its comprehensive capturing and editing features – supports a structured patient management system and facilitates simple integration with your existing EMR or DICOM system. Regardless of the environment that you choose, enjoy easy access to images anytime, anywhere.



Technical specifications

	Imaging Module 910	Imaging Module 910 3D	Imaging Module 600
Compatibility	BQ 900	BQ 900	BP 900 and BQ 900
Beam path	Right side	Right and left side	Right side
Control panel	RM03	RM03	RM02
Depth of focus control	Yes	Yes	No
Camera interface	CoaXPress	CoaXPress	USB 3.0
Shutter system	Global shutter	Global shutter	Global shutter
Resolution	4K (Ultra High-Definition)	4K (Ultra High-Definition)	1920 x 1200px
Frame rate	30 (frames per second)	30 (frames per second)	30 (frames per second)
Software	EyeSuite Imaging (optional)	EyeSuite Imaging (optional)	EyeSuite Imaging (mandatory)
EMR interfaces	EyeSuite script language, DICOM (SCU) GDT, Samba Share for direct import into patient file	EyeSuite script language, DICOM (SCU) GDT, Samba Share for direct import into patient file	EyeSuite script language, DICOM (SCU) GDT
Connector Box	Yes	Yes	No
Connector Box connectivity	HDMI out DisplayPort out Ethernet	HDMI out DisplayPort out Ethernet	n/a





HAAG-STREIT AG

Gartenstadtstrasse 10
3098 Koeniz
Switzerland

Phone +41 31 978 01 11

Fax +41 31 978 02 82

info@haag-streit.com

www.haag-streit.com