



Intelligent Blocker  
**ICE-1**



Multifunctional blocker,  
with the pursuit  
of user-friendliness



# ICE-1

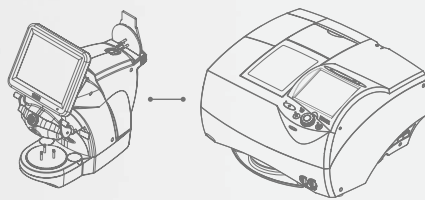
Intelligent Blocker

The ICE-1 is an easy-to-use intelligent blocker with consistent accuracy and stability in blocking. As developed with an emphasis on usability for anyone, from beginners to advanced, this instrument offers operators a remarkably comfortable experience. Various editing functions that realize customer's demands can be used intuitively on the screen.

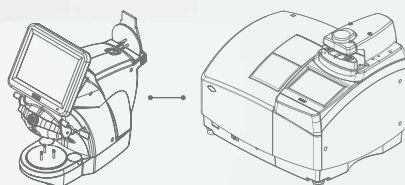
In combination with NIDEK lens edgers, it offers a smooth, highly efficient workflow for making eyeglasses. This is a solution that renders a comfortable workspace for any operator.

## System configurations

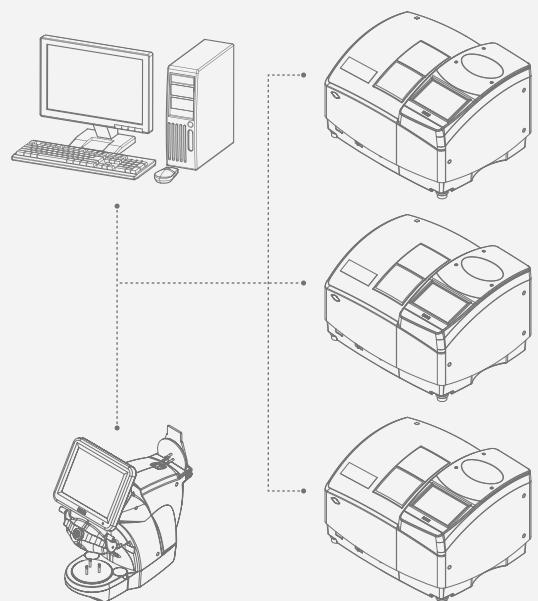
- ▶ with ME-1500  
For multi-purpose lens edging



- ▶ with LEXCE Trend series  
For highly efficient lens edging



- ▶ with iRx Server (server software)  
For high volume production



## Sensible mechanical design



The sensible mechanical design allows the operator to confirm lens shape and data images simultaneously.

A large 8.4-inch color LCD touch screen shows lens shape and layout information in real scale with high visibility contrast. The storage space for accessories is designed to enable easy storage and accessibility.

## One-touch blocking

A single finger is all that is required for the ICE-1 blocking. The blocking motion is accurate, quick, and comfortable without needing extra pressure or effort. Two types of lens tables are provided, standard and small diameter.



## Flexible lens stage (optional)

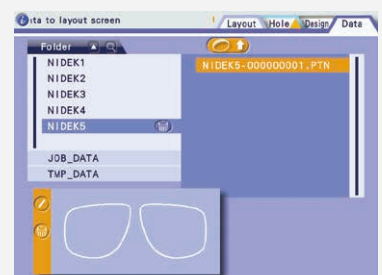
The flexible lens stage oscillates, keeping the front base curve of the lens at the optimal horizontal position. The stabilized lens position reduces the gap and prevents sliding or movement of the lens. Therefore, highly precise blocking is consistently obtained.



## Data management function

The data management feature allows data storing, searching, and recalling of traced data. A maximum of 30,000 patterns can be saved. Data can also be saved to a USB flash drive\* as backup.

\*USB flash drive is optional.



## Shape imager function

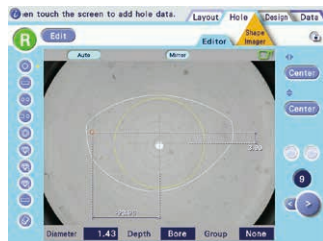
The shape imager function can detect the outer shape of a demo lens or pattern.



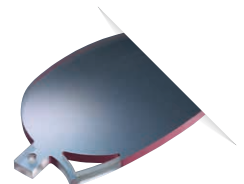
## Hole & design edit function

With an easy-to-understand display and comfortable operation using a stylus pen and numeric keypad, hole and lens shape can be edited more easily than anyone could expect.

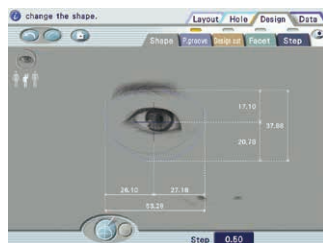
### 1. Hole editor



### 4. Design cut editor



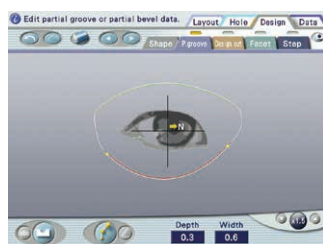
### 2. Shape editor



### 5. Facet editor



### 3. Partial groove / partial bevel editor



### 6. Step / partial step editor



## ICE-1 Specifications

Lens size	Lens diameter: $\phi$ 110 mm or less
Layout span	FPD: 30.00 to 99.50 mm PD (or 1/2 PD): 30.00 to 99.50 mm (15.00 to 49.75 mm) Height of the optical center: 0 to $\pm$ 15.0 mm Size adjustment: 0 to $\pm$ 9.95 mm WD: 15.0 to 45.0 mm EP: 0.0 to $\pm$ 6.0 mm
Item to be entered	FPD (or DBL) PD (or 1/2 PD) Height of the optical center (frame center, BT height, PD height) EP (height of the distance eye point of progressive lens) Shape size Lens material (CR-39, Hi-index, Polycarbonate, Acrylic, Trivex, Urethane, Glass) Frame type (Metal, Plastic, Optyl, Two Point, Nylon) Processing mode (Auto, Guide, HC Auto, HC Guide, Step Auto, Step Guide, Flat) Lens type (Single, Multi, Progressive, Demo lens) Job code
Shape imager function	Measurement range: 65.5 x 49.0 mm ( $\pm$ 1.5 mm) Hole position: 0.01 mm increments Hole diameter: $\phi$ 0.50 to 10.00 mm (0.01 mm increments)
Blocking method	Manual blocking
Display	8.4-inch SVGA color LCD touch panel
Interface	RS-232C - 4 ports 1 port for connection with a first lens edger or server computer 1 port for connection with a second lens edger 1 port for connection with a tracer 1 port for connection with a barcode scanner LAN - 1 port USB - 1 port
Power supply	100 to 240 V AC, 50/60 Hz
Power consumption	60 VA
Dimensions/mass	225 (W) x 411 (D) x 439 (H) mm / 7.5 kg 8.9 (W) x 16.2 (D) x 17.3 (H)" / 16.5 lbs.
Standard accessories	Shape measurement table, Lens table (standard), Small diameter lens table, Stylus pen, Pen stand, Cap, Shading cover, Ferrite core, LAN cable (cross), Power cord
Optional accessories	External barcode scanner, USB flash drive, WECO cup holder, Flexible positioning adjuster R/L (Flexible lens stage), Spatula, Special clay, RS-232C cable

Specifications and design are subject to change without notice.

Trivex and CR-39 are registered trademarks of PPG Industries Ohio, Inc.

Optyl is a registered trademark of Safilo.

All other brand and product names are trademarks or registered trademarks of their respective companies.



**HEAD OFFICE**  
(International Div.)  
34-14 Maehama,  
Hiroishi-cho, Gamagori,  
Aichi 443-0038, JAPAN  
TEL: +81-533-67-8895  
URL: www.nidek.com

**TOKYO OFFICE**  
(International Div.)  
3F Sumitomo Fudosan Hongo  
Bldg., 3-22-5 Hongo, Bunkyo-ku,  
Tokyo 113-0033, JAPAN  
TEL: +81-3-5844-2641  
URL: www.nidek.com

**NIDEK INC.**  
2040 Corporate Court,  
San Jose, CA 95131, U.S.A.  
TEL: +1-408-468-6400  
+1-800-223-9044  
(US Only)  
URL: usa.nidek.com

**NIDEK S.A.**  
Ecoparc,  
9 rue Benjamin Franklin,  
94370 Sucy En Brie,  
FRANCE  
TEL: +33-1-49 80 97 97  
URL: www.nidek.fr

**NIDEK TECHNOLOGIES S.R.L.**  
Via dell'Artigianato,  
6/A, 35020 Albignasego (Padova),  
ITALY  
TEL: +39 049 8629200/8626399  
URL: www.nidektechnologies.it

**NIDEK (SHANGHAI) CO., LTD.**  
Rm3205, Shanghai Multi  
Media Park, No.1027 Chang  
Ning Rd, Chang Ning District,  
Shanghai, CHINA 200050  
TEL: +86 021-5212-7942  
URL: www.nidek-china.cn

**NIDEK SINGAPORE PTE. LTD.**  
51 Changi Business Park  
Central 2, #06-14,  
The Signature 486066,  
SINGAPORE  
TEL: +65 6588 0389  
URL: www.nidek.sg

[Manufacturer]